

Polk County Sheriff's Office

OFFICE OF PROFESSIONAL COMPLIANCE

ADMINISTRATIVE INVESTIGATIONS SECTION



2007 Protective Action Annual Report
April 1, 2008

TABLE OF CONTENTS

Introduction.....	6
2007 Protective Action Incident Summary.....	7
2007 Protective Action Incidents by Bureau/District Department of Law Enforcement.....	9
2007 Protective Action Incidents by Bureau/Facility Department of Detention.....	12
2007 Level 6 Protective Action Incidents.....	15
2007 Level 4 Electromuscular Disruption (EMD) Device Protective Action Incidents.....	17
2007 Level 4 Canine Protective Action Incidents	19
2007 Early Intervention Program (EIP) Alerts	21
2007 Arrests Involving the Use of Protective Action.....	22
2007 Protective Action Incidents Demographic Summary	24

TABLES, CHARTS & EXHIBITS

TABLE 1	2007 Protective Action Incidents Polk County Sheriff's Office	7
TABLE 2	2007 Protective Action Incidents by Bureau/District Department of Law Enforcement.....	10
TABLE 3	2007 Protective Action Incidents by Bureau/Facility Department of Detention.....	13
TABLE 4	2007 Level 6 Protective Action Incidents by Bureau/District Department of Law Enforcement.....	15
TABLE 5	2007 Level 4 EMD Protective Action Incidents by Bureau/District Department of Law Enforcement.....	17
TABLE 6	2007 Level 4 Canine Protective Action Incidents by Bureau/District Department of Law Enforcement.....	19
TABLE 7	2007 Arrests Involving the Use of Protective Action Polk County Sheriff's Office	22
TABLE 8	2007 Protective Action Incidents by Day of Week Department of Law Enforcement.....	24
TABLE 9	2007 Protective Action Incidents by Day of Week Department of Detention.....	25
TABLE 10	2007 Protective Action Incidents by Subject Age Group Department of Law Enforcement.....	26
TABLE 11	2007 Protective Action Incidents by Subject Age Group Department of Detention.....	27
TABLE 12	2007 Protective Action Incidents by Member Age Group Department of Law Enforcement.....	28
TABLE 13	2007 Protective Action Incidents by Member Age Group Department of Detention.....	29
TABLE 14	2007 Protective Action Incidents by Member to Subject by Gender Department of Law Enforcement.....	30
TABLE 15	2007 Protective Action Incidents by Member to Subject by Gender Department of Detention.....	31

TABLE 16	2007 Protective Action Incidents by Member to Subject by Race Department of Law Enforcement.....	32
----------	---	----

TABLE 17	2007 Protective Action Incidents by Member to Subject by Race Department of Detention.....	33
----------	---	----

CHART 1	2007 Protective Action Incidents.....	8
---------	---------------------------------------	---

CHART 2	2007 Protective Action Incidents by Bureau/District Department of Law Enforcement.....	11
---------	---	----

CHART 3	2007 Protective Action Incidents by Bureau/Facility Department of Detention.....	14
---------	---	----

CHART 4	2007 Level 6 Protective Action Incidents by Bureau/District Department of Law Enforcement.....	16
---------	---	----

CHART 5	2007 Level 4 EMD Protective Action Incidents by Bureau/District Department of Law Enforcement.....	18
---------	---	----

CHART 6	2007 Level 4 Canine Protective Action Incidents by Bureau/District Department of Law Enforcement.....	20
---------	--	----

GRAPH 1	2007 Arrests Involving the Use of Protective Action Polk County Sheriff’s Office	23
---------	---	----

GRAPH 2	2007 Protective Action Incidents by Day of Week Department of Law Enforcement.....	24
---------	---	----

GRAPH 3	2007 Protective Action Incidents by Day of Week Department of Detention.....	25
---------	---	----

GRAPH 4	2007 Protective Action Incidents by Subject Age Group Department of Law Enforcement.....	26
---------	---	----

GRAPH 5	2007 Protective Action Incidents by Subject Age Group Department of Detention.....	27
---------	---	----

GRAPH 6	2007 Protective Action Incidents by Member Age Group Department of Law Enforcement.....	28
GRAPH 7	2007 Protective Action Incidents by Member Age Group Department of Detention.....	29
GRAPH 8	2007 Protective Action Incidents by Member to Subject by Gender Department of Law Enforcement.....	30
GRAPH 9	2007 Protective Action Incidents by Member to Subject by Gender Department of Detention.....	31
GRAPH 10	2007 Protective Action Incidents by Member to Subject by Race Department of Law Enforcement.....	32
GRAPH 11	2007 Protective Action Incidents by Member to Subject by Race Department of Detention.....	33

EXHIBIT 1	Polk County Sheriff's Office Protective Action Response to Resistance Continuum.....	34

INTRODUCTION

Pursuant to P.C.S.O. General Order 1.5 – Protective Action, and CALEA Standard 1.3.13, an annual review and analysis regarding the agency use of protective actions has been completed.

The 2007 Protective Action Annual Report provides a comprehensive review of all reported protective actions by agency members during 2007 and provides a detailed summary and analysis of protective action incidents within each department/office, division, and bureau/district component of the agency.

The Sheriff's Office Protective Action Policy is delineated in General Order 1.5 – Protective Action. The agency's policy is to establish and maintain stringent guidelines governing the use of protective actions by agency members. Designated agency members are trained in the lawful and approved methods of self-defense and use of authorized protective actions, wherein appropriate levels of protective action may be used to overcome particular levels of subject/suspect resistance. Members acting within their official capacity may use only that level of protective action which is reasonably necessary to affect lawful enforcement objectives. Justification for engaging protective actions is those facts known or perceived by a member, given the "totality of the circumstances" at the time protective action is utilized.

The response continuum is illustrated in the Polk County Sheriff's Office Protective Action Response to Resistance Continuum - PCSO Form 563 (Exhibit 1.) All certified, sworn, and designated civilian agency members receive mandatory in-service training governing the use of protective actions which includes a comprehensive review of the agency's policy and legal issues regarding same.

In accordance with agency policy, all members are required to report and document the use of protective action. Department of Law Enforcement members are required to report, document, and complete a Protective Action Report (PCSO Form 206A) when engaging in any Level 4 or higher use of protective action. Department of Detention members are required to report, document, and complete a PCSO Protective Action Report when engaging in any Level 3 or higher use of protective action. All Protective Action Reports are reviewed by supervisory/command staff for policy compliance. All Protective Action Reports are either approved by command staff and/or referred to the proper authority for further review and inquiry/investigation regarding policy compliance and/or training issues.

There were no reported uses of protective action within the Office of the Sheriff and the Office of Business Affairs during 2007. All reported protective action incidents during 2007 involved members assigned to the Department of Law Enforcement and the Department of Detention.

All approved Protective Action Reports are forwarded to the Administrative Investigations Section (AIS) for review and entry into the computerized Administrative Investigations Management (AIM) System. The protective action data is then tracked for contemporaneous review and reporting purposes in conjunction with the agency's Early Intervention Program (EIP).

A copy of all approved Protective Action Reports is forwarded to the Training Section for subject matter expert review regarding training/proficiency requirements, equipment, and officer safety issues.

2007 PROTECTIVE ACTION INCIDENT SUMMARY

A total of **547 protective action incidents** were documented in the Polk County Sheriff's Office for the period from January 1, 2007 through December 31, 2007. This represents an **increase of 64 (+13.3%)** from 2006 (483) as summarized below (Table 1).

Table 1 and Chart 1 summarize the total number of 2007 protective action incidents occurring within the Polk County Sheriff's Office.

2007 PROTECTIVE ACTION INCIDENTS POLK COUNTY SHERIFF'S OFFICE

DISTRICT/BUREAU	YEAR 2005	YEAR 2006	YEAR 2007	NUMERICAL/ PERCENT INCREASE OR DECREASE 2005/2006	NUMERICAL/ PERCENT INCREASE OR DECREASE 2006/2007	CUMULATIVE PERCENT INCREASE OR DECREASE 2005-2007
Office of the Sheriff	0	0	0	0/0.0%	0/0.0%	0.0%
Office of the Sheriff	0	0	0	0/0.0%	0/0.0%	0.0%
Department of Law Enforcement	201	180	212	-21/-10.5%	+32/+17.8%	+7.3%
Department of Detention	543	303	335	-240/-44.2%	+32/+10.6%	-33.6%
Office of Business Affairs	0	0	0	0/0.0%	0/0.0%	0.0%
TOTAL PROTECTIVE ACTION INCIDENTS	744	483	547	-261/-35.1%	+64/+13.3%	-21.8%

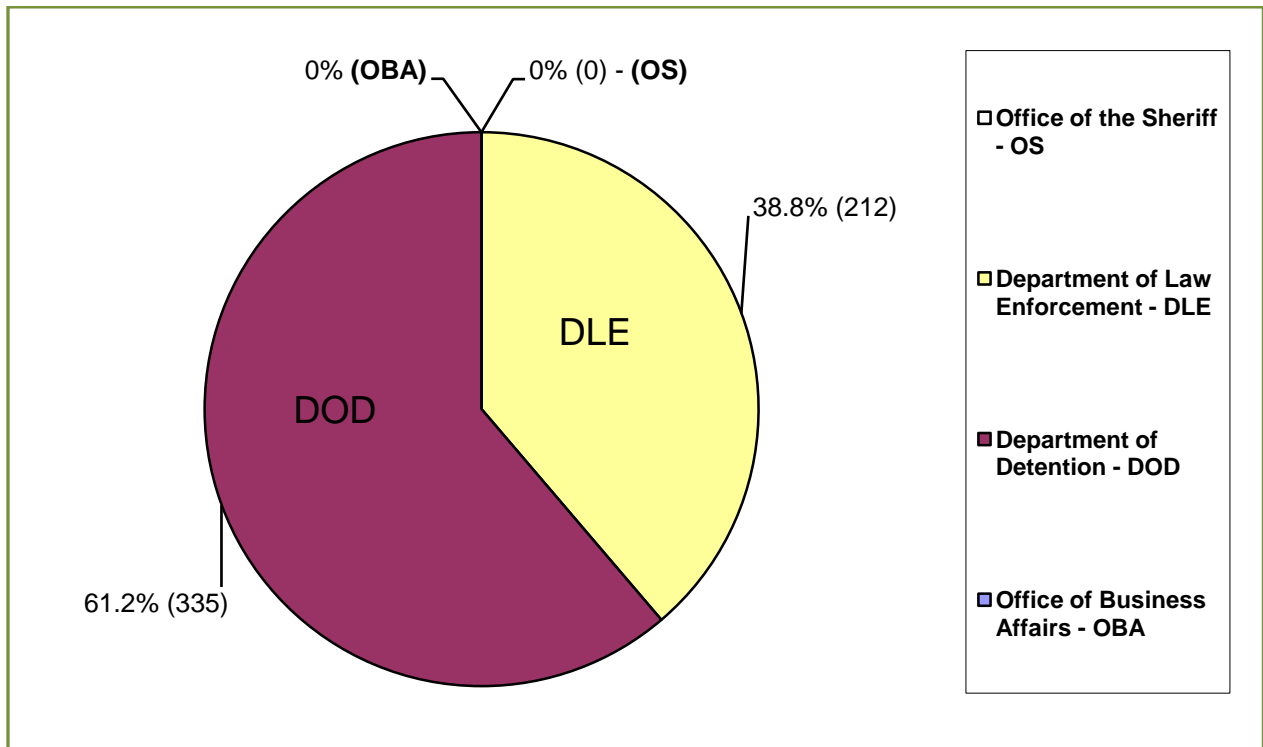
*Excludes accidental discharge incidents

SOURCE: PCSO AIM SYSTEM 2008

TABLE 1

Note: Rounded to nearest tenth percent

2007 PROTECTIVE ACTION INCIDENTS



SOURCE: PCSO AIM SYSTEM 2008

CHART 1

Note: Rounded to nearest tenth percent

A review of the reported 2007 protective action data revealed the following:
[CALEA 1.3.13]

Training Issues

Analysis by Training Section subject matter experts did not reveal any patterns or trends that identified any specific training/proficiency issues regarding member use of protective action.

Policy

Analysis by Command/Supervisor subject matter experts did not reveal any patterns or trends that could indicate the requirement for policy review/modification regarding protective action.

Equipment

Analysis by Training Section subject matter experts did not reveal any patterns or trends that could indicate the requirement for protective action equipment upgrade/acquisition.

2007 PROTECTIVE ACTION INCIDENTS BY BUREAU/DISTRICT
DEPARTMENT OF LAW ENFORCEMENT

A total of **212 protective action incidents** were reported and documented in the Department of Law Enforcement between January 1, 2007 and December 31, 2007. Of the 212 protective action incidents **190 protective action incidents** were **Level 4 and above**. This represents a **16.6% overall increase (27)** from 2006 Protective Action incidents (**Level 4 and above**), as summarized on Page 10 (Table 2).

It should be noted that the number of dispatched calls for service in 2007 increased (271,637 in 2007 versus 243,177 in 2006). This represents an **increase of 11.7% (28,460)** calls for service.

The total number of 2007 Department of Law Enforcement protective action incidents (**Level 4 and above**) occurring within specific divisions and districts/bureaus are summarized as follows:

Criminal Investigations Division - 1

BSI - 1 (Level 4)
BCI - 0

Special Operations Division - 6

BSS - 2 (Level 6)
BSO - 4 (Level 6)

East Division - 97

Northeast District	<u>25</u>	Southeast District	<u>72</u>
Level 4	24	Level 4	68
Level 5	1	Level 5	0
Level 6	0	Level 6	4

West Division - 86

Northwest District	<u>36</u>	Southwest District	<u>50</u>
Level 4	32	Level 4	48
Level 5	0	Level 5	0
Level 6	4	Level 6	2

Note: Rounded to nearest tenth percent

Table 2 and Chart 2 summarize the total number of 2007 Department of Law Enforcement protective action incidents occurring within specific divisions and bureaus/districts.

2007 PROTECTIVE ACTION INCIDENTS BY BUREAU/DISTRICT
DEPARTMENT OF LAW ENFORCEMENT

BUREAU/DISTRICT	LEVEL 4	LEVEL 5	LEVEL 6	TOTALS
Bureau of Criminal Investigations – BCI	0	0	0	0
Bureau of Special Investigations – BSI	1	0	0	1
Bureau of Support Services - BSS	0	0	2	2
Bureau of Support Operations - BSO	0	0	4	4
Northeast District - NE	24	1	0	25
Southeast District - SE	68	0	4	72
Northwest District - NW	32	0	4	36
Southwest District - SW	48	0	2	50
TOTALS EACH LEVEL – 2007	173	1	16	190
PERCENTAGE – 2007	91.1%	0.5%	8.4%	100.0%
TOTALS EACH LEVEL – 2006	154	3	6	163*
TOTALS EACH LEVEL – 2005	167	2	15	184*
PERCENT INCREASE OR DECREASE 2006/2007	+12.3%	-66.6%	+166.7%	+16.6%
PERCENT INCREASE OR DECREASE 2005/2006	-7.8%	+50.0%	-60.0%	-11.4%
CUMULATIVE PERCENT INCREASE OR DECREASE	+4.5%	-16.6%	+106.7%	+5.2%

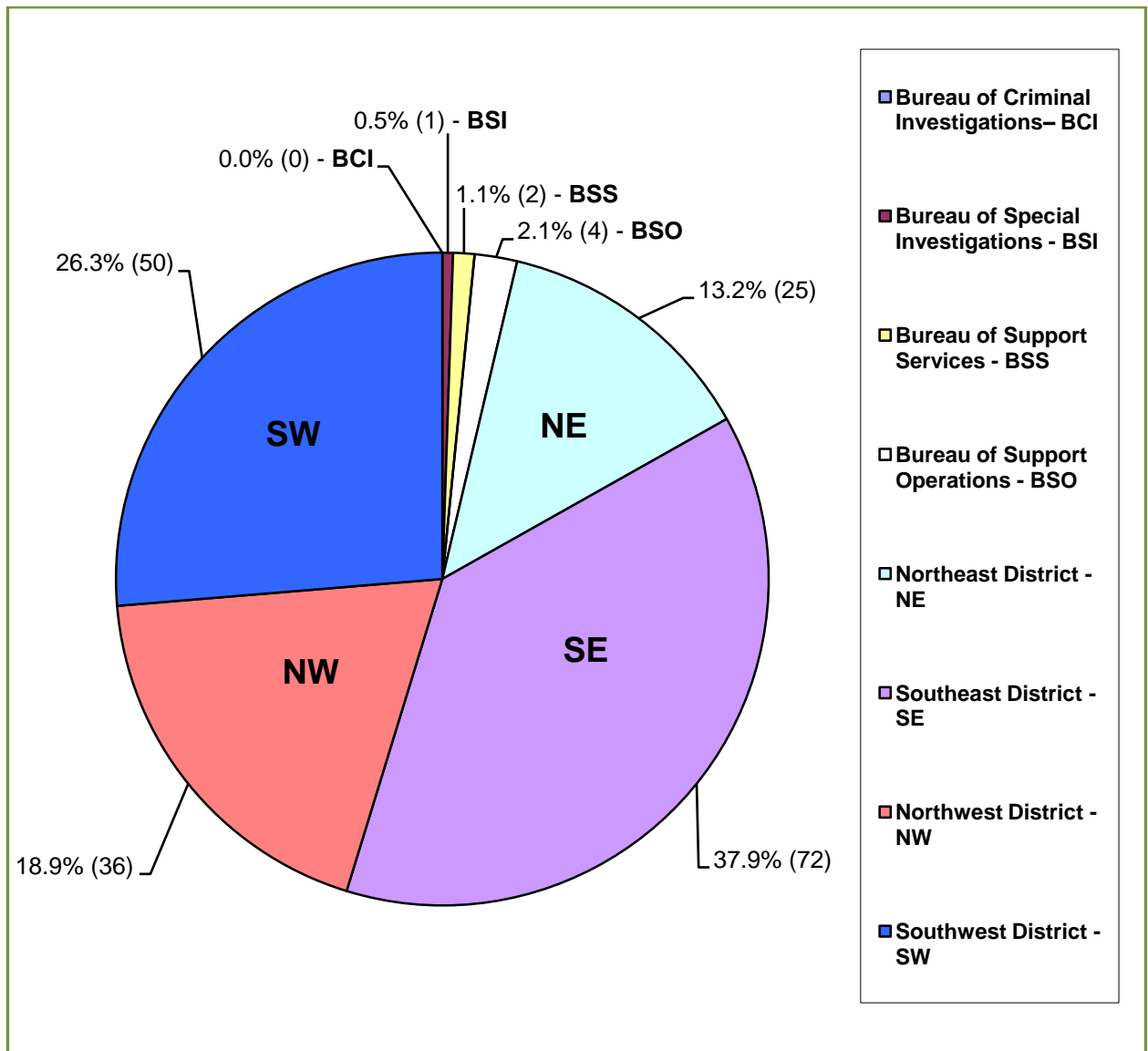
*Excludes accidental discharge incidents

SOURCE: PCSO AIM SYSTEM 2008

TABLE 2

Note: Rounded to nearest tenth percent

2007 PROTECTIVE ACTION INCIDENTS BY BUREAU/DISTRICT
DEPARTMENT OF LAW ENFORCEMENT



SOURCE: PCSO AIM SYSTEM 2008

CHART 2

Note: Rounded to nearest tenth percent

2007 PROTECTIVE ACTION INCIDENTS BY BUREAU/FACILITY
DEPARTMENT OF DETENTION

A total of **335 Level 3 and above protective action incidents** were reported and documented within the Department of Detention between January 1, 2007 and December 31, 2007. This represents a **10.6% overall increase** from 2006 protective action incidents Level 3 and above (**303**) as summarized on Page 13 (Table 3).

It should also be noted that the total number of Department of Detention housed inmates also **increased by 315** inmates (31,600 in 2006 and 31,915 in 2007), which represents a **1.0% increase in inmate population**.

The total number of 2007 Department of Detention protective action incidents (**Level 3 and above**) occurring within specific divisions, bureaus and other locations are summarized as follows:

<u>Security Division</u>	<u>295</u>
Central County Jail Bureau	103
South County Jail Bureau	149
Sheriff's STAR Program	43
<u>Support Division</u>	<u>40</u>
Court and Support Services	10
Intake and Records Bureau (Booking)	30

Note: Rounded to nearest tenth percent

Table 3 and Chart 3 summarize the total number of 2007 Department of Detention Level 3 and above protective action incidents occurring within specific divisions and bureaus/facilities.

2007 PROTECTIVE ACTION INCIDENTS BY BUREAU/FACILITY
DEPARTMENT OF DETENTION

LOCATION	LEVEL 3	LEVEL 4	LEVEL 5	LEVEL 6	TOTALS
Central County Jail - CCJ	58	39	6	0	103
South County Jail - SCJ	61	86	2	0	149
Sheriff's STAR Program - STAR	43	0	0	0	43
Court & Support Services - C&SS	8	2	0	0	10
Intake and Records Bureau - I&RB	27	3	0	0	30
TOTALS EACH LEVEL – 2007	197	130	8	0	335
PERCENTAGE – 2007	58.8%	38.8%	2.4%	0.0%	100.0%
TOTALS EACH LEVEL – 2006	177	116	10	0	303*
TOTALS EACH LEVEL – 2005	293	232	17	1	543*
PERCENT INCREASE OR DECREASE 2006/2007	+11.3%	+12.1%	-20.0%	0.0%	+10.6%
PERCENT INCREASE OR DECREASE 2005/2006	-39.6%	-50.0%	-41.2%	-100.0%	-44.2%
CUMULATIVE PERCENT INCREASE OR DECREASE 2005-2007	-28.3%	-37.9%	-61.2%	-100.0%	-33.6%

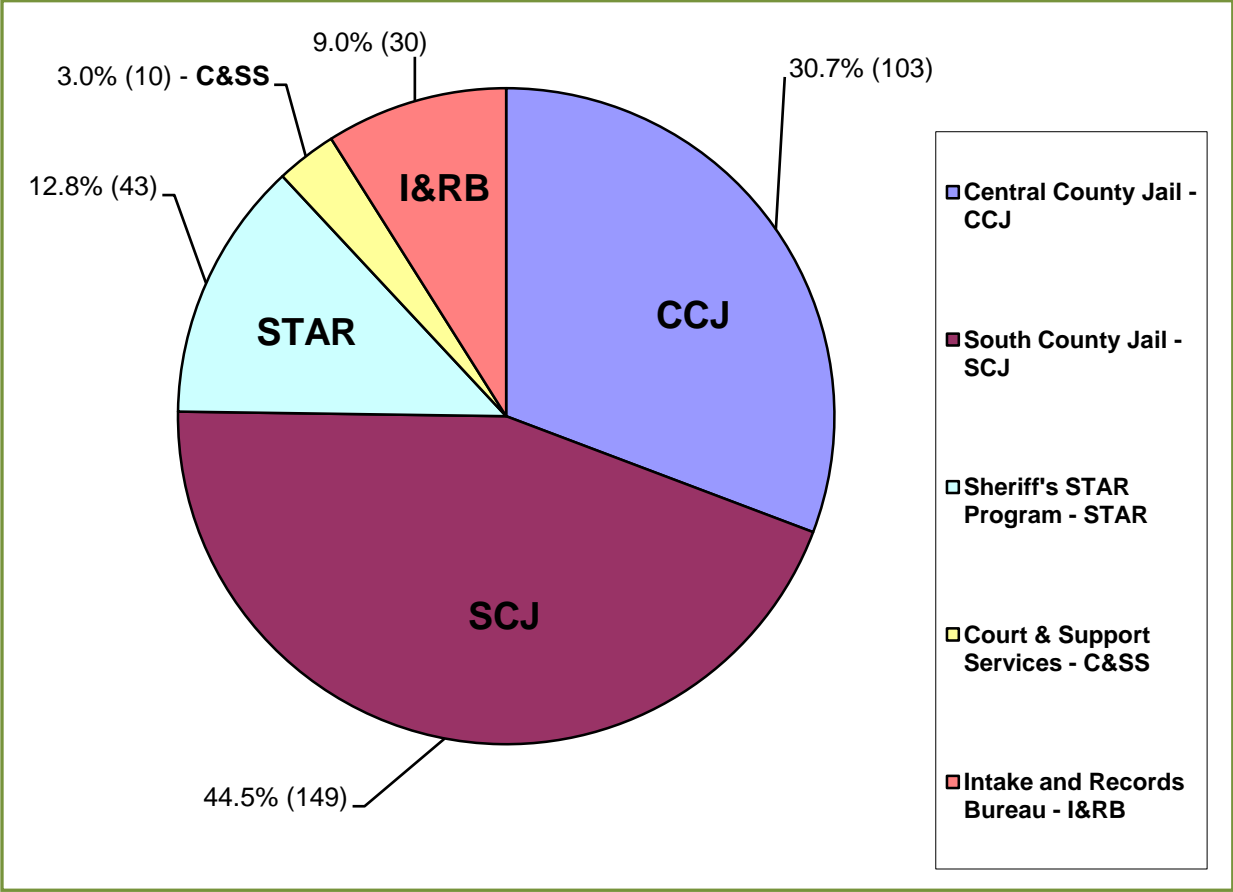
*Excludes accidental discharge incidents

SOURCE: PCSO AIM SYSTEM 2008

TABLE 3

Note: Rounded to nearest tenth percent

2007 PROTECTIVE ACTION INCIDENTS BY BUREAU/FACILITY
DEPARTMENT OF DETENTION



SOURCE: PCSO AIM SYSTEM 2008

CHART 3

Note: Rounded to nearest tenth percent

2007 LEVEL 6 PROTECTIVE ACTION INCIDENTS

There were no Level 6 protective action incidents reported in the Office of the Sheriff, Department of Detention or the Office of Business Affairs.

The Department of Law Enforcement reported sixteen (16) instances of **Level 6** use of protective action in 2007. This represents an **increase of 9 (+128.6%)** from 2006 (7) as summarized below (Table 4).

Fourteen (14) of the sixteen (16) Level 6 protective action incidents that occurred during 2007 were responses by Department of Law Enforcement Deputy Sheriffs to incidents involving injured or dangerous animals. All involved the use of agency-issued firearms. All were properly reported, documented and approved by supervisory/command staff, requiring no further inquiry/investigation. The review of these incidents determined that no policy violations occurred.

The remaining two (2) of the Level 6 protective action incidents that occurred during 2007 involved authorized legal interventions with agency-issued motor vehicles involved in authorized pursuits to halt suspect vehicles. During both incidents, stop sticks had previously been deployed. Both Level 6 protective action incidents (LP07-086 and LP07-170) occurred in the Northwest District.

Table 4 and Chart 4 summarize the total number of 2007 Department of Law Enforcement Level 6 protective action incidents occurring within specific divisions and bureaus/districts.

2007 LEVEL 6 PROTECTIVE ACTION INCIDENTS BY BUREAU/DISTRICT DEPARTMENT OF LAW ENFORCEMENT

DISTRICT/BUREAU	YEAR 2005	YEAR 2006	YEAR 2007	NUMERICAL/ PERCENT INCREASE OR DECREASE 2005/2006	NUMERICAL/ PERCENT INCREASE OR DECREASE 2006/2007	CUMULATIVE PERCENT INCREASE OR DECREASE 2005-2007
Bureau of Criminal Investigations - BCI	0	0	0	0/0.0%	0/0.0%	0.0%
Bureau of Support Services - BSS	0	1	2	+1/N/A	+1/+100.0%	N/A
Bureau of Support Operations - BSO	0	0	4	0/0.0%	+4/N/A	N/A
Northeast District - NE	5	0	0	-5/-100.0%	0/0.0%	-100.0%
Southeast District - SE	2	3	4	+1/+50.0%	+1/+33.3%	+83.3%
Northwest District - NW	5	2	4	-3/-60.0%	+2/+100.0%	+40.0%
Southwest District - SW	3	1	2	-2/-66.7%	+1/+100.0%	+33.3%
TOTAL LEVEL 6 PROTECTIVE ACTION INCIDENTS	15*	7*	16	-8/-53.3%	+9/+128.6%	+75.3%

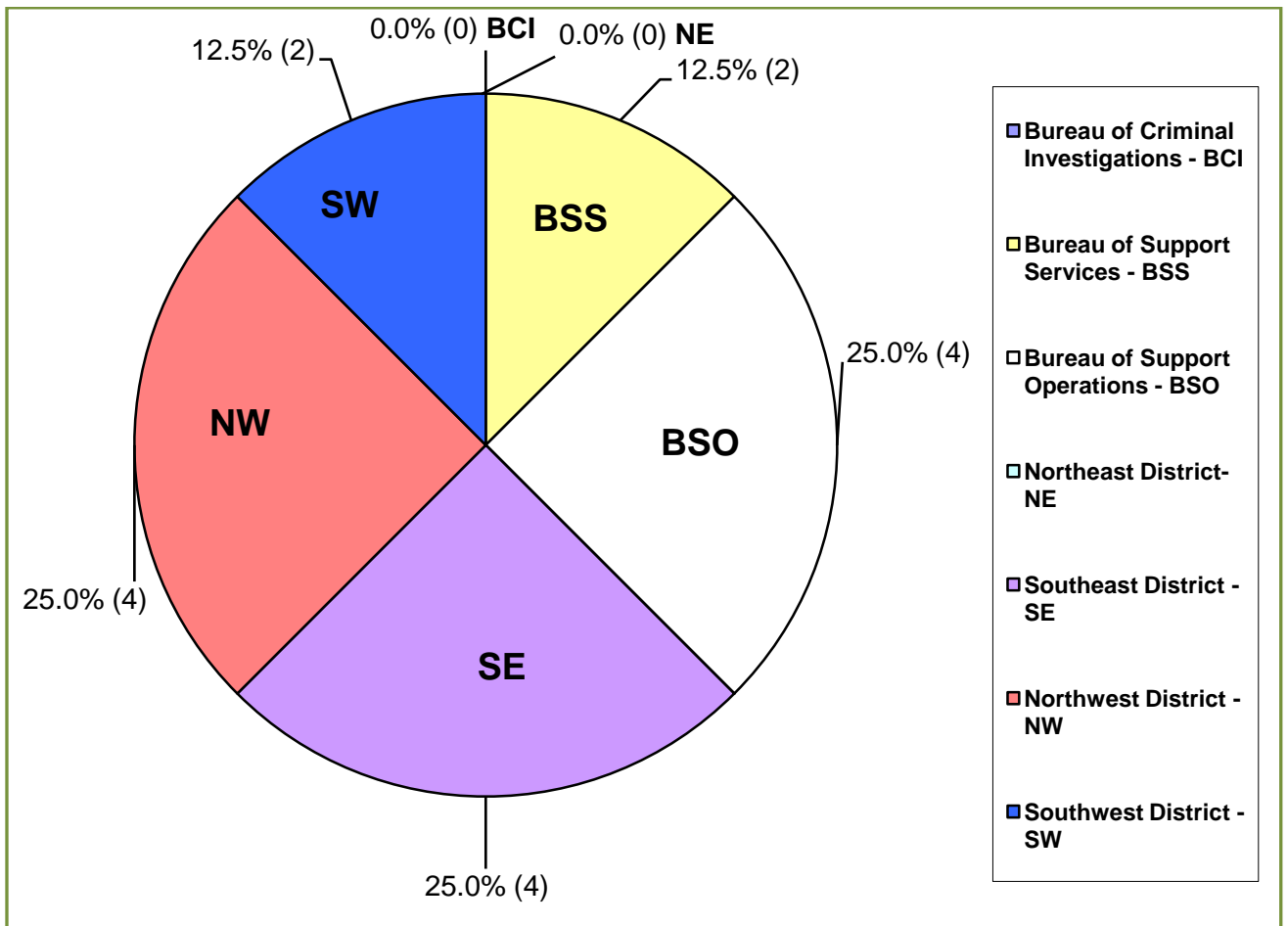
*Excludes accidental discharge incidents

SOURCE: PCSO AIM SYSTEM 2008

TABLE 4

Note: Rounded to nearest tenth percent

2007 LEVEL 6 PROTECTIVE ACTION INCIDENTS BY BUREAU/DISTRICT
DEPARTMENT OF LAW ENFORCEMENT



SOURCE: PCSO AIM SYSTEM 2008

CHART 4

Note: Rounded to nearest tenth percent

**2007 LEVEL 4 ELECTROMUSCULAR DISRUPTION (EMD) DEVICE
PROTECTIVE ACTION INCIDENTS**

There were no reported Level 4 protective action incidents involving the use of Electromuscular Disruption (EMD) devices (Taser®) within the Office of the Sheriff or the Office of Business Affairs during 2007.

There were **143** reported Department of Law Enforcement **Level 4 protective action incidents** in 2007 involving the use of EMDs. This represents an **increase of 33 (+30.0%)** from 2006 (110) as summarized below (Table 5). All incidents were properly reported and documented. All Protective Action Reports were reviewed and approved by supervisory/command staff, requiring no further inquiry/investigation. No policy violations were noted.

There were **2** reported Department of Detention **Level 4 protective action incidents** in 2007 involving the use of EMDs. One incident was reported at Central County Jail and the other incident was reported at South County Jail. This represents an **increase of 2 (+100.0%)** from 2006 (0). All incidents were properly reported and documented. All Protective Action Reports were reviewed and approved by supervisory/command staff, requiring no further inquiry/investigation. No policy violations were noted.

An analysis completed by the Training Section subject matter experts of all reported 2007 Level 4 EMD protective action incidents revealed no patterns or trends that would require equipment upgrades, in-service training and/or policy modifications.

Table 5 and Chart 5 summarize the total number of 2007 Department of Law Enforcement Level 4 EMD protective action incidents occurring within specific divisions and bureaus/districts.

**2007 LEVEL 4 EMD PROTECTIVE ACTION INCIDENTS BY BUREAU/DISTRICT
DEPARTMENT OF LAW ENFORCEMENT**

BUREAU/DISTRICT	YEAR 2005	YEAR 2006	YEAR 2007	NUMERICAL/ PERCENT INCREASE OR DECREASE 2005/2006	NUMERICAL/ PERCENT INCREASE OR DECREASE 2006/2007	CUMULATIVE PERCENT INCREASE OR DECREASE 2005-2007
Bureau of Criminal Investigations – BCI	0	0	0	0/0.0%	0/0.0%	0%
Bureau of Special Investigations – BSI	3	5	1	+2/+66.7%	-4/-80.0%	-13.3%
Northeast District - NE	36	24	21	-12/-33.3%	-3/-12.5%	-45.8%
Southeast District - SE	31	38	63	+7/+22.6%	+25/+65.8%	+88.4%
Northwest District - NW	25	15	26	-10/-40.0%	+11/+73.3%	+33.3%
Southwest District - SW	30	28	32	-2/-6.7%	+4/+14.3%	+7.6%
TOTAL LEVEL 4 EMD PROTECTIVE ACTION INCIDENTS	125*	110*	143	-15/-12.0%	+33/+30.0%	+18.0%

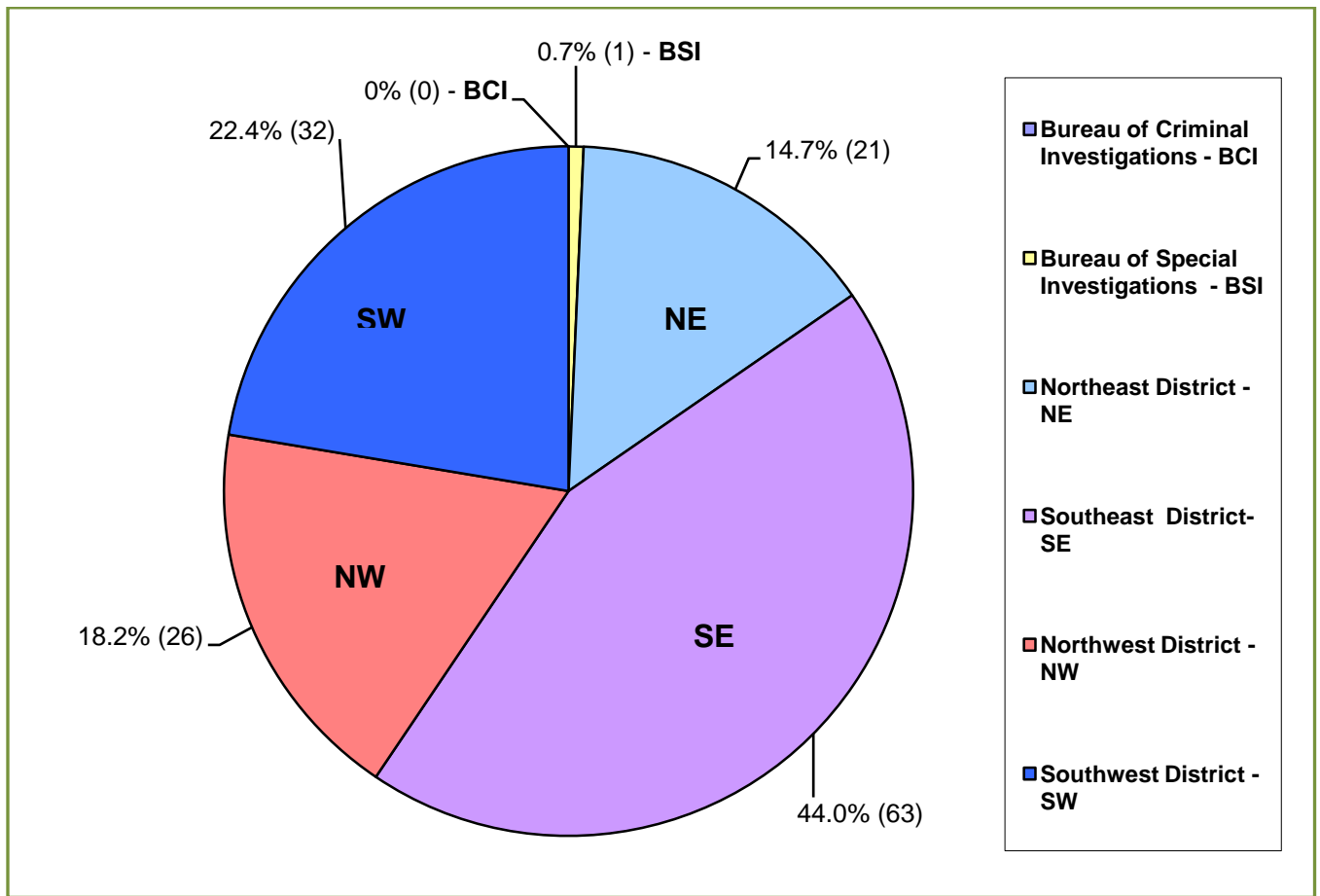
*Excludes accidental discharge incidents

SOURCE: PCSO AIM SYSTEM 2008

TABLE 5

Note: Rounded to nearest tenth percent

2007 LEVEL 4 EMD PROTECTIVE ACTION INCIDENTS BY BUREAU/DISTRICT
DEPARTMENT OF LAW ENFORCEMENT



SOURCE: PCSO AIM SYSTEM 2008

CHART 5

Note: Rounded to nearest tenth percent

2007 LEVEL 4 CANINE PROTECTIVE ACTION INCIDENTS

There were **21** reported Department of Law Enforcement Level 4 protective action incidents in 2007, involving the use of agency canines. This represents an **increase of 6 (+40%)** from 2006 (15) as summarized below (Table 6). All incidents were properly reported and documented. All Protective Action Reports were reviewed and approved by supervisory/command staff, requiring no further inquiry/investigation. No policy violations were noted.

Table 6 and Chart 6 summarize the total number of 2007 Department of Law Enforcement Level 4 canine protective action incidents occurring within specific divisions and bureaus/districts.

2007 LEVEL 4 CANINE PROTECTIVE ACTION INCIDENTS BY BUREAU/DISTRICT
DEPARTMENT OF LAW ENFORCEMENT

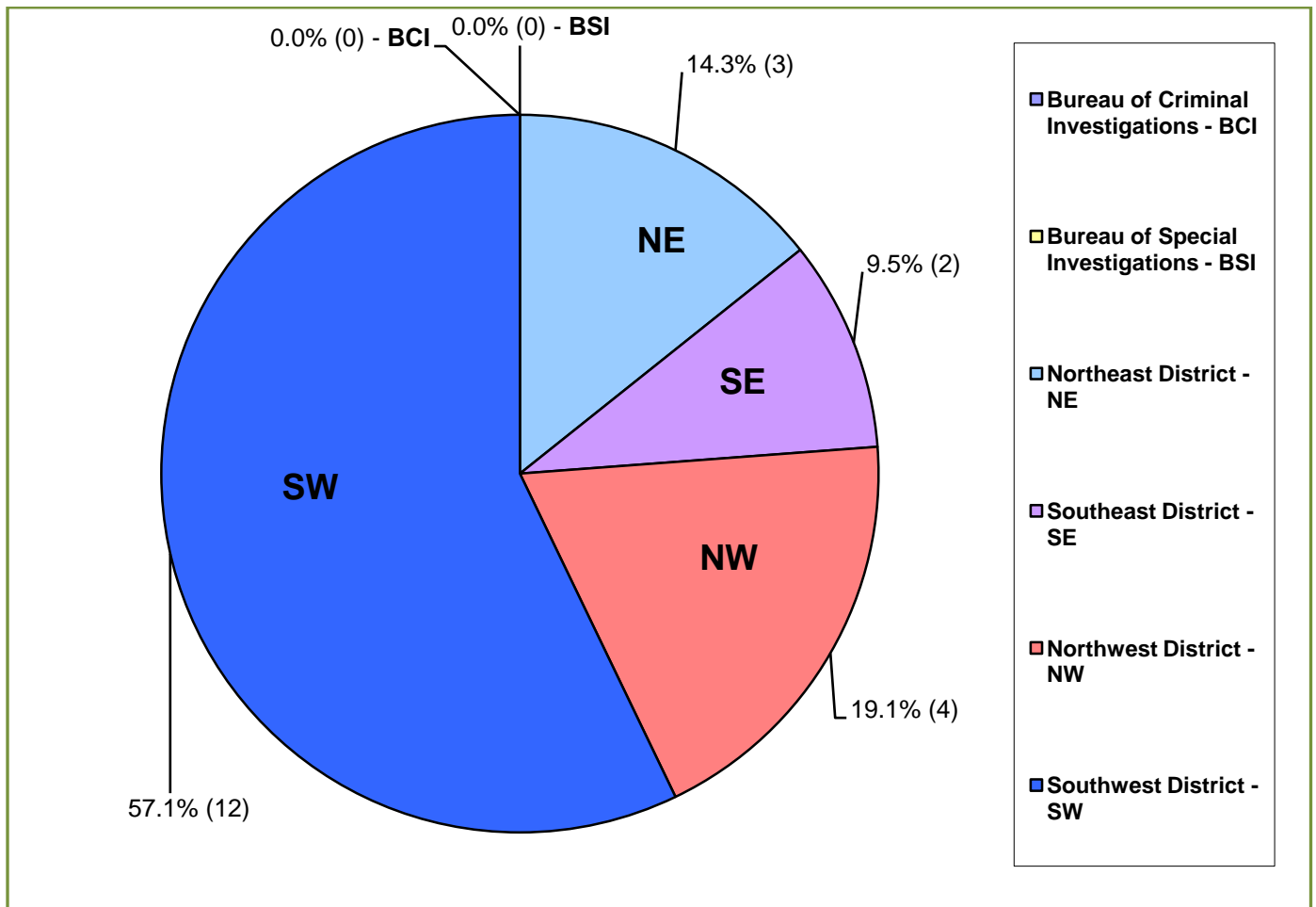
DISTRICT/BUREAU	YEAR 2005	YEAR 2006	YEAR 2007	NUMERICAL/ PERCENT INCREASE OR DECREASE 2005/2006	NUMERICAL/ PERCENT INCREASE OR DECREASE 2006/2007	CUMULATIVE PERCENT INCREASE OR DECREASE 2005-2007
Bureau of Criminal Investigations - BCI	0	0	0	0/0.0%	0/0.0%	0.0%
Bureau of Special Investigations - BSI	0	1	0	+1/N/A	-1/-100.0%	N/A
Northeast District - NE	7	4	3	-3/-42.9%	-1/-25.0%	-67.9%
Southeast District - SE	3	4	2	+1/+33.3%	-2/-50.0%	-16.7%
Northwest District - NW	5	4	4	-1/-20.0%	0/0.0%	-20.0%
Southwest District - SW	10	2	12	-8/-80.0%	+10/+500.0%	+420.0%
TOTAL LEVEL 4 CANINE PROTECTIVE ACTION INCIDENTS	25	15	21	-10/-40.0%	+6/+40.0%	0.0%

SOURCE: PCSO AIM SYSTEM 2008

TABLE 6

Note: Rounded to nearest tenth percent

2007 LEVEL 4 CANINE PROTECTIVE ACTION INCIDENTS BY BUREAU/DISTRICT
DEPARTMENT OF LAW ENFORCEMENT



SOURCE: PCSO AIM SYSTEM 2008

CHART 6

Note: Rounded to nearest tenth percent

2007 EARLY INTERVENTION PROGRAM (EIP) ALERTS

A comprehensive Early Intervention Program (EIP) system is an essential component of good discipline in a well-managed law enforcement agency. The EIP is a supervisory/management tool to systematically assess various factors related to a member's performance and behavior.

The EIP is designed to identify potential below standard performance issues and resolve them by early intervention. The early intervention of these potential below standard performance issues and appropriate follow-up intervention/remedial actions shall increase the agency's accountability and offer members a better opportunity to achieve the agency's Core Values and Mission.

In accordance with General Order 35.2 - Early Intervention Program (EIP), any *member involved in five (5) uses of level four (4) or above protective actions within a consecutive three (3)-month period*, causes the initiation of a Tracking Notification (PCSO Form 1561) by the AIS. The Tracking Notification is forwarded to the affected member's district/bureau captain/deputy director or higher authority for review and intervention when required.

During the year 2007, there were three (3) EIP alerts initiated involving the use of protective actions. They are as follows:

- 1) TN07-003. An EIP alert was initiated after a Southeast District deputy utilized five (5) Level 4 protective actions within a consecutive three (3)-month period (10/23/2006, 11/4/2006, 11/5/2006, 11/23/2006, 1/18/2007). All of the protective actions were approved by the affected member's chain of command and were found to be in compliance with Florida State Statutes and PCSO General Orders. The EIP alert was reviewed by the affected member's supervision and no further action was taken.
- 2) TN07-004. An EIP alert was initiated after a South County Jail detention deputy utilized five (5) Level 4 protective actions within a consecutive three (3)-month period (12/3/2006, 12/7/2006, 1/23/2007, 1/26/2007, 2/2/2007). All of the protective actions were approved by the affected member's chain of command and were found to be in compliance with Florida State Statutes and PCSO General Orders. The EIP alert was reviewed by the affected member's supervision and no further action was taken.
- 3) TN07-008. An EIP alert was initiated after a Southeast District deputy utilized five (5) Level 4 protective actions within a consecutive three (3)-month period (8/11/2007, 8/25/2007, 10/16/2007, 10/24/2007, 10/25/2007). All of the protective actions were approved by the affected member's chain of command and were found to be in compliance with Florida State Statutes and PCSO General Orders. The EIP alert was reviewed by the affected member's supervision and no further action was taken.

2007 ARRESTS INVOLVING THE USE OF PROTECTIVE ACTION

A total of **16,673 arrests** by PCSO Law Enforcement Deputies were reported and documented between January 1, 2007 and December 31, 2007. This represents an **increase of 1,487 (+9.8%)** from 2006 (15,186). During the course of these arrests, PCSO Deputies utilized **176 (1.1%) Level 4 or higher protective actions**. This represents an **increase of 1 (+0.6%)** from 2006 (175) as summarized below (Table 7).

Table 7 and Graph 1 summarize the total number of 2007 arrests involving the use of protective action occurring within the Polk County Sheriff’s Office.

2007 ARRESTS INVOLVING THE USE OF PROTECTIVE ACTION
POLK COUNTY SHERIFF’S OFFICE

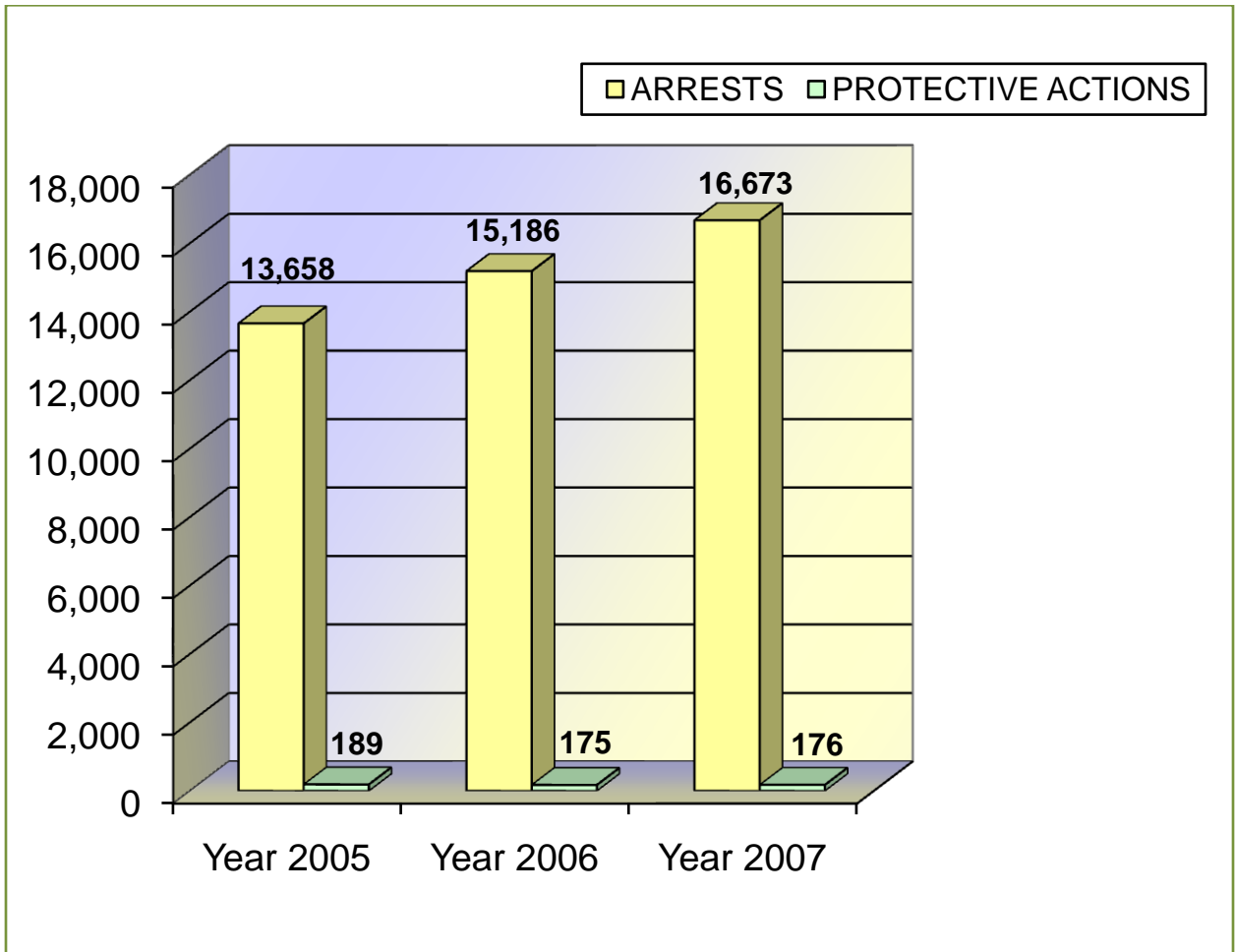
YEAR	ARRESTS	PROTECTIVE ACTIONS
Year 2005	13,658	189
Year 2006	15,186	175
Year 2007	16,673	176
NUMERICAL/PERCENT INCREASE OR DECREASE – 2005/2006	+1,528/+11.2%	-14/-7.4%
NUMERICAL/PERCENT INCREASE OR DECREASE – 2006/2007	+1,487/+9.8%	+1/+0.6%
CUMULATIVE PERCENT INCREASE OR DECREASE – 2005-2007	+21.0%	-6.8%

SOURCE: PCSO AIM SYSTEM 2008

TABLE 7

Note: Rounded to nearest tenth percent

2007 ARRESTS INVOLVING THE USE OF PROTECTIVE ACTION
POLK COUNTY SHERIFF'S OFFICE



PCSO AIM SYSTEM 2008

GRAPH 1

2007 PROTECTIVE ACTION INCIDENTS DEMOGRAPHIC SUMMARY

Table 8 and Graph 2 summarize the total number of 2007 protective action incidents by day of week occurring within the Department of Law Enforcement.

2007 PROTECTIVE ACTION INCIDENTS BY DAY OF WEEK
DEPARTMENT OF LAW ENFORCEMENT

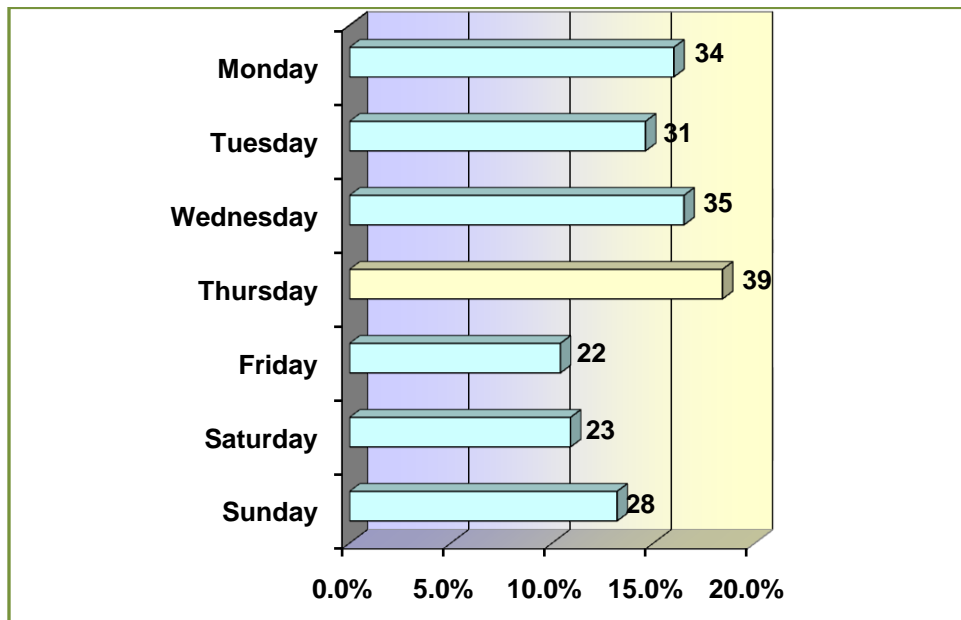
PROTECTIVE ACTION INCIDENTS BY DAY OF WEEK DEPARTMENT OF LAW ENFORCEMENT		
DAY OF WEEK	NUMBER	PERCENTAGE
Monday	34	16.0%
Tuesday	31	14.6%
Wednesday	35	16.5%
Thursday	39	18.4%
Friday	22	10.4%
Saturday	23	10.9%
Sunday	28	13.2%
TOTAL	212	100.0%

SOURCE: PCSO AIM SYSTEM 2008

TABLE 8

Note: Rounded to nearest tenth percent

2007 PROTECTIVE ACTION INCIDENTS BY DAY OF WEEK
DEPARTMENT OF LAW ENFORCEMENT



SOURCE: PCSO AIM SYSTEM 2008

GRAPH 2

Note: Rounded to nearest tenth percent

Table 9 and Graph 3 summarize the total number of 2007 protective action incidents by day of week occurring within the Department of Detention.

2007 PROTECTIVE ACTION INCIDENTS BY DAY OF WEEK
DEPARTMENT OF DETENTION

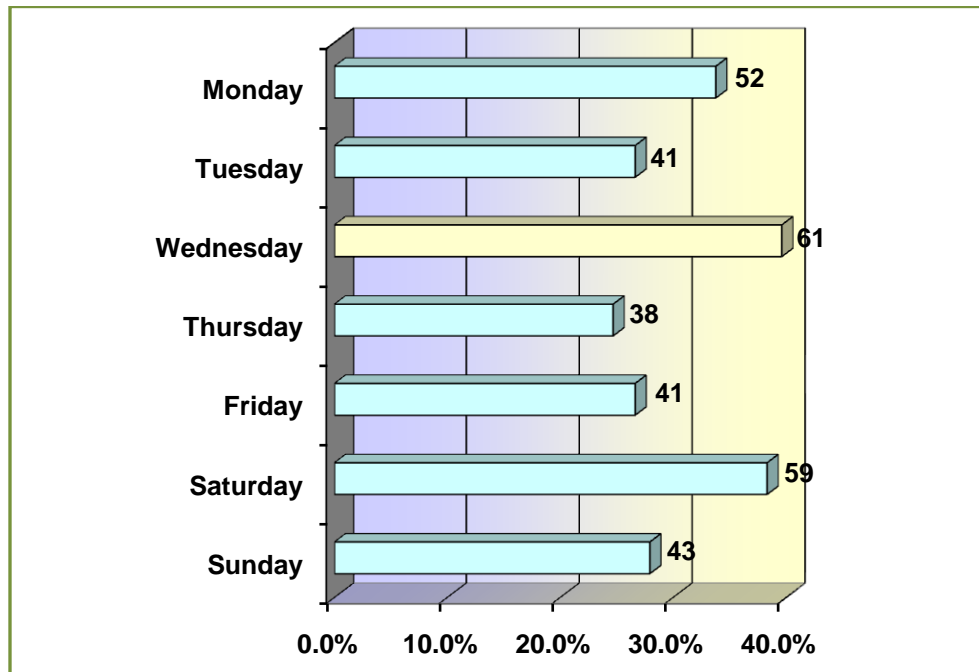
PROTECTIVE ACTION INCIDENTS BY DAY OF WEEK DEPARTMENT OF DETENTION		
DAY OF WEEK	NUMBER	PERCENTAGE
Monday	52	15.5%
Tuesday	41	12.3%
Wednesday	61	18.2%
Thursday	38	11.3%
Friday	41	12.3%
Saturday	59	17.6%
Sunday	43	12.8%
TOTAL	335	100.0%

SOURCE: PCSO AIM SYSTEM 2008

TABLE 9

Note: Rounded to nearest tenth percent

2007 PROTECTIVE ACTION INCIDENTS BY DAY OF WEEK
DEPARTMENT OF DETENTION



SOURCE: PCSO AIM SYSTEM 2008

GRAPH 3

Note: Rounded to nearest tenth percent

Table 10 and Graph 4 summarize the total number of 2007 protective action incidents by subject age group occurring within the Department of Law Enforcement

2007 PROTECTIVE ACTION INCIDENTS BY SUBJECT AGE GROUP
DEPARTMENT OF LAW ENFORCEMENT

PROTECTIVE ACTIONS BY SUBJECT AGE GROUP DEPARTMENT OF LAW ENFORCEMENT		
SUBJECT AGE GROUP	NUMBER	PERCENTAGE
13-17 Years of Age	13	7.2%
18-25 Years of Age	48	26.5%
26-30 Years of Age	30	16.6%
31-35 Years of Age	31	17.1%
36-40 Years of Age	21	11.6%
41-45 Years of Age	22	12.2%
46-50 Years of Age	8	4.4%
51-54 Years of Age	3	1.7%
56-42 Years of Age	5	2.8%
TOTAL	181*	100.0%

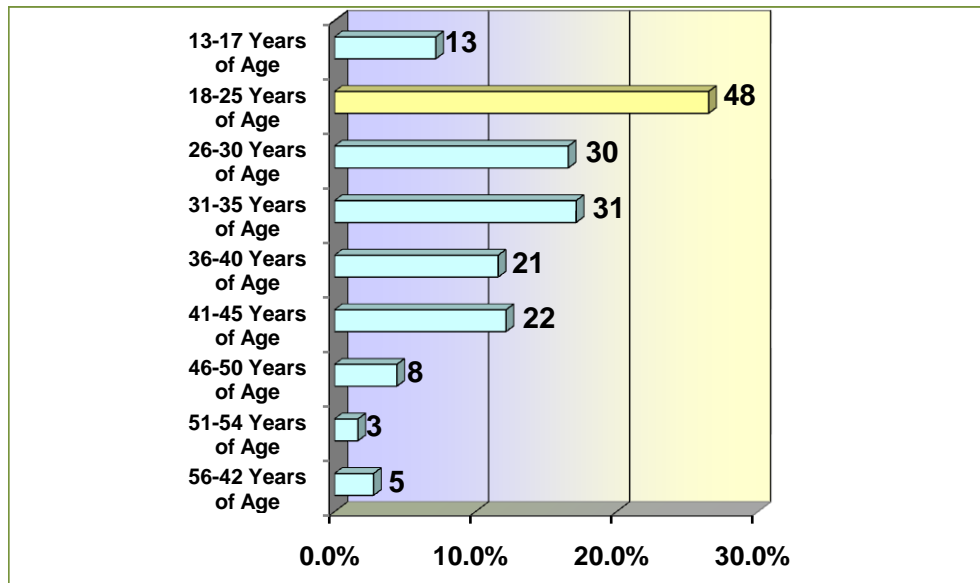
SOURCE: PCSO AIM SYSTEM 2008

*Excludes animal, accidental discharge incidents and subjects fled

TABLE 10

Note: Rounded to nearest tenth percent

2007 PROTECTIVE ACTION INCIDENTS BY SUBJECT AGE GROUP
DEPARTMENT OF LAW ENFORCEMENT



SOURCE: PCSO AIM SYSTEM 2008

GRAPH 4

Note: Rounded to nearest tenth percent

Table 11 and Graph 5 summarize the total number of 2007 protective action incidents by subject age group occurring within the Department of Detention.

2007 PROTECTIVE ACTION INCIDENTS BY SUBJECT AGE GROUP
DEPARTMENT OF DETENTION

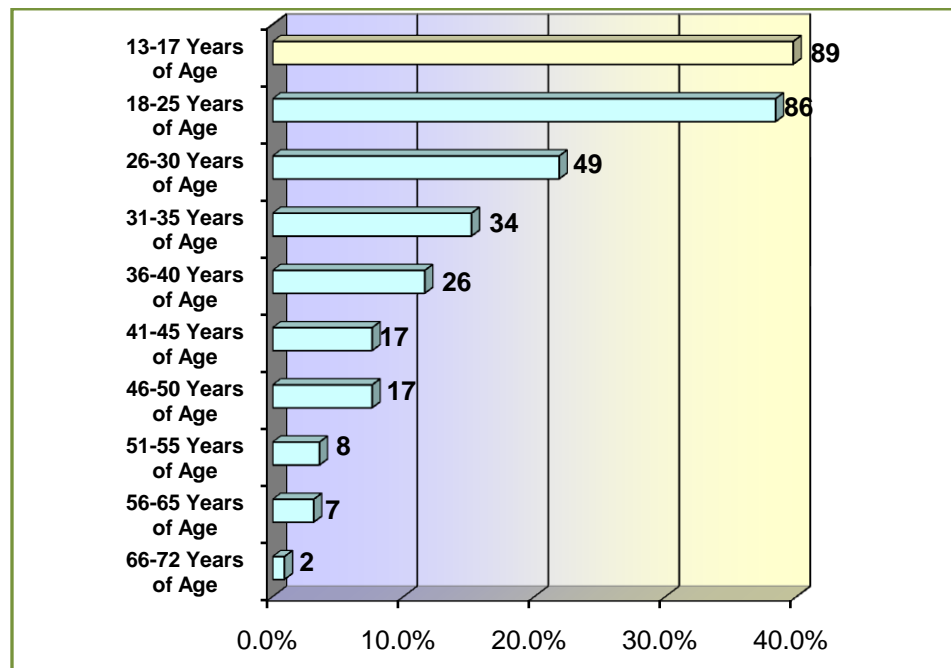
PROTECTIVE ACTION INCIDENTS BY SUBJECT AGE GROUP DEPARTMENT OF DETENTION		
SUBJECT AGE GROUP	NUMBER	PERCENTAGE
13-17 Years of Age	89	26.6%
18-25 Years of Age	86	25.7%
26-30 Years of Age	49	14.6%
31-35 Years of Age	34	10.1%
36-40 Years of Age	26	7.7%
41-45 Years of Age	17	5.1%
46-50 Years of Age	17	5.1%
51-55 Years of Age	8	2.4%
56-65 Years of Age	7	2.1%
66-72 Years of Age	2	0.6%
TOTAL	335	100.0%

SOURCE: PCSO AIM SYSTEM 2008

TABLE 11

Note: Rounded to nearest tenth percent

2007 PROTECTIVE ACTION INCIDENTS BY SUBJECT AGE GROUP
DEPARTMENT OF DETENTION



GRAPH 5

SOURCE: PCSO AIM SYSTEM 2008

Note: Rounded to nearest tenth percent

Table 12 and Graph 6 summarize the total number of 2007 protective action incidents by member age group occurring within the Department of Law Enforcement.

2007 PROTECTIVE ACTION INCIDENTS BY MEMBER AGE GROUP
DEPARTMENT OF LAW ENFORCEMENT

PROTECTIVE ACTION INCIDENTS BY MEMBER AGE GROUP DEPARTMENT OF LAW ENFORCEMENT		
MEMBER AGE GROUP	NUMBER	PERCENTAGE
18-25 Years of Age	30	16.6%
26-30 Years of Age	51	28.2%
31-35 Years of Age	43	23.7%
36-40 Years of Age	27	14.9%
41-45 Years of Age	17	9.4%
46-50 Years of Age	4	2.2%
51-54 Years of Age	6	3.3%
55-62 Years of Age	3	1.7%
TOTAL	181*	100.0%

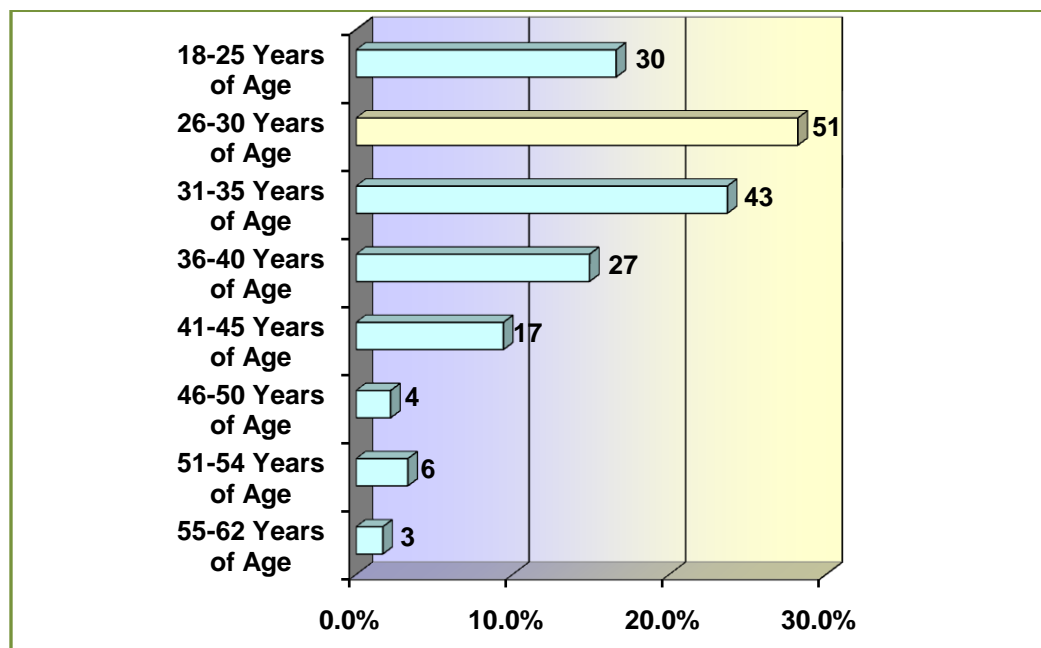
SOURCE: PCSO AIM SYSTEM 2008

* Excludes animal, accidental discharge incidents and subjects fled

TABLE 12

Note: Rounded to nearest tenth percent

2007 PROTECTIVE ACTION INCIDENTS BY MEMBER AGE GROUP
DEPARTMENT OF LAW ENFORCEMENT



GRAPH 6

SOURCE: PCSO AIM SYSTEM 2008

Note: Rounded to nearest tenth percent

Table 13 and Graph 7 summarize the total number of 2007 protective action incidents by member age group occurring within the Department of Detention.

2007 PROTECTIVE ACTION INCIDENTS BY MEMBER AGE GROUP
DEPARTMENT OF DETENTION

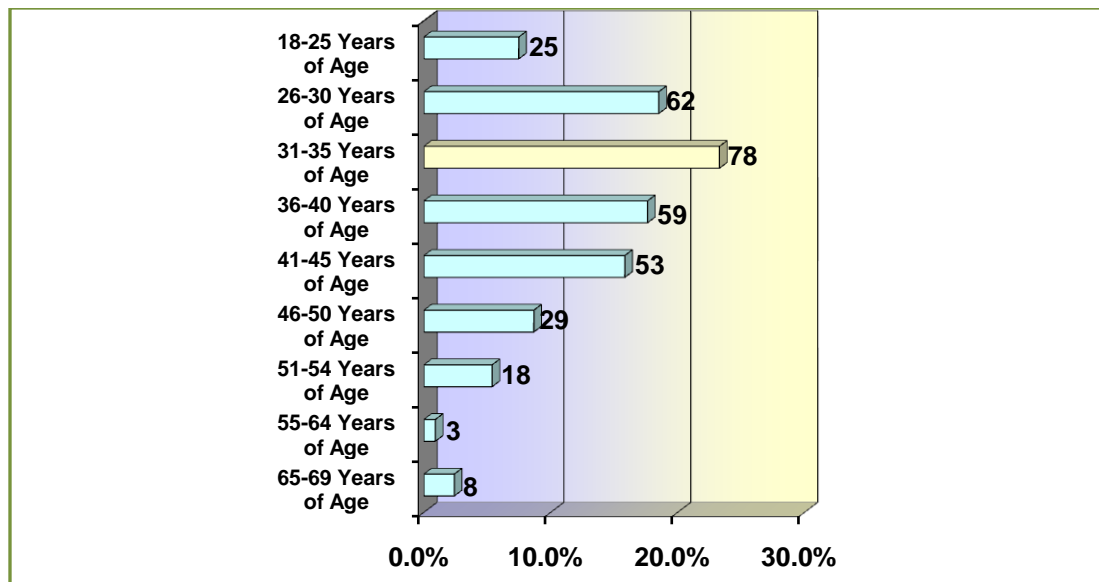
PROTECTIVE ACTION INCIDENTS BY MEMBER AGE GROUP DEPARTMENT OF DETENTION		
MEMBER AGE GROUP	NUMBER	PERCENTAGE
18-25 Years of Age	25	7.5%
26-30 Years of Age	62	18.5%
31-35 Years of Age	78	23.3%
36-40 Years of Age	59	17.6%
41-45 Years of Age	53	15.8%
46-50 Years of Age	29	8.7%
51-54 Years of Age	18	5.3%
55-64 Years of Age	3	0.9%
65-69 Years of Age	8	2.4%
TOTAL	335	100.0%

SOURCE: PCSO AIM SYSTEM 2008

TABLE 13

Note: Rounded to nearest tenth percent

2007 PROTECTIVE ACTION INCIDENTS BY MEMBER AGE GROUP
DEPARTMENT OF DETENTION



SOURCE: PCSO AIM SYSTEM 2008

GRAPH 7

Note: Rounded to nearest tenth percent

Table 14 and Graph 8 summarize the total number of 2007 protective action incidents by member to subject by gender occurring within the Department of Law Enforcement.

2007 PROTECTIVE ACTION INCIDENTS BY MEMBER TO SUBJECT BY GENDER
DEPARTMENT OF LAW ENFORCEMENT

PROTECTIVE ACTION INCIDENTS BY MEMBER TO SUBJECT BY GENDER DEPARTMENT OF LAW ENFORCEMENT			
MEMBER	SUBJECT	NUMBER	PERCENTAGE
Female	Female	2	1.1%
Female	Male	18	9.9%
Male	Female	14	7.8%
Male	Male	147	81.2%
TOTAL		181*	100.0%

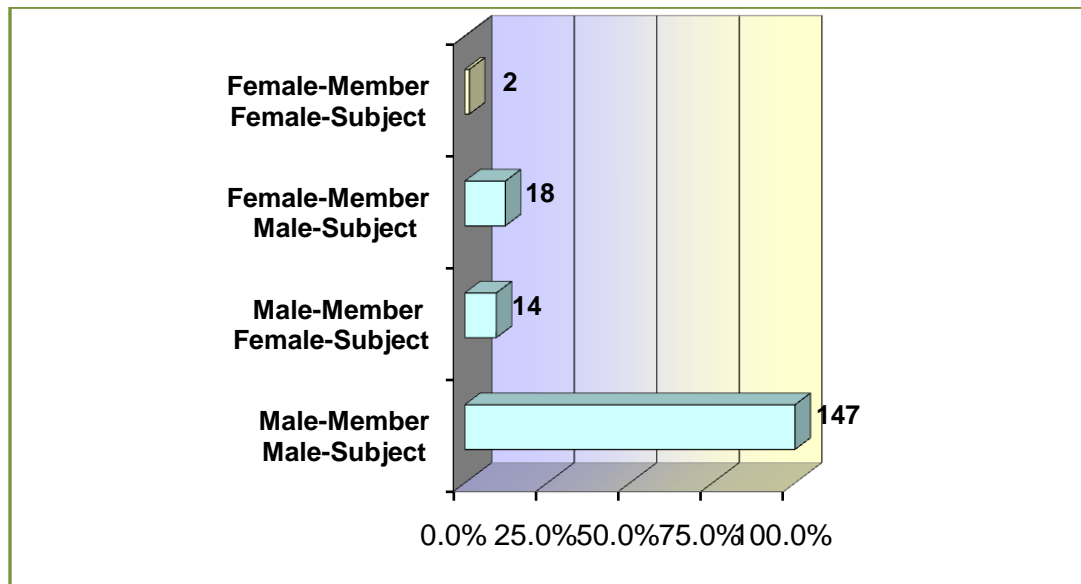
SOURCE: PCSO AIM SYSTEM 2008

*Excludes animal, accidental discharge incidents and subjects fled

TABLE 14

Note: Rounded to nearest tenth percent

2007 PROTECTIVE ACTION INCIDENTS BY MEMBER TO SUBJECT BY GENDER
DEPARTMENT OF LAW ENFORCEMENT



SOURCE: PCSO AIM SYSTEM 2008

GRAPH 8

Note: Rounded to nearest tenth percent

Table 15 and Graph 9 summarize the total number of 2007 protective action incidents by member to subject by gender occurring within the Department of Detention.

2007 PROTECTIVE ACTION INCIDENTS BY MEMBER TO SUBJECT BY GENDER
DEPARTMENT OF DETENTION

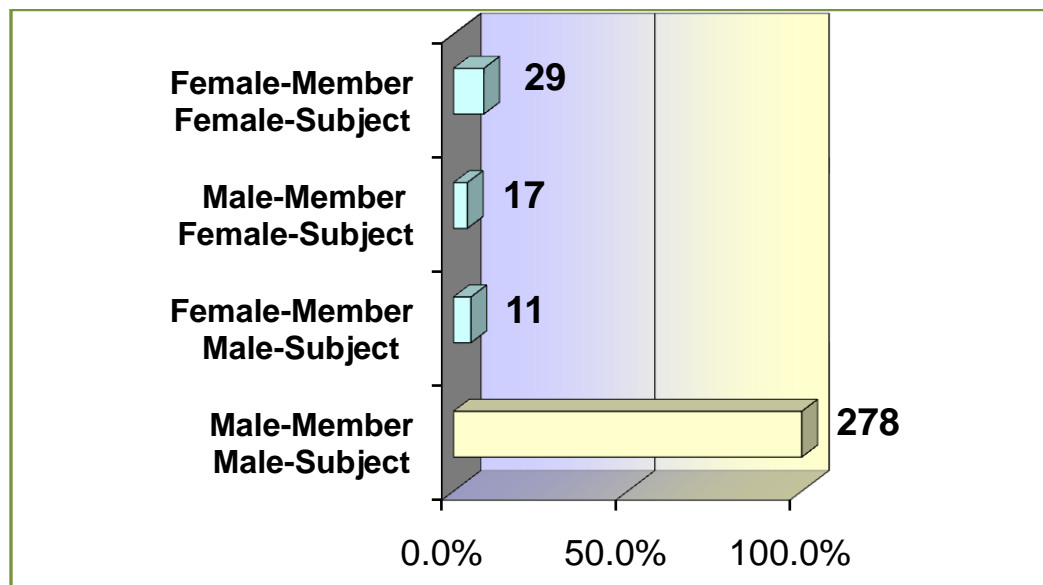
PROTECTIVE ACTION INCIDENTS BY MEMBER TO SUBJECT BY GENDER DEPARTMENT OF DETENTION			
MEMBER	SUBJECT	NUMBER	PERCENTAGE
Female	Female	29	8.7%
Female	Male	17	5.0%
Male	Female	11	3.3%
Male	Male	278	83.0%
TOTAL		335	100.0%

SOURCE: PCSO AIM SYSTEM 2008

TABLE 15

Note: Rounded to nearest tenth percent

2007 PROTECTIVE ACTION INCIDENTS BY MEMBER TO SUBJECT BY GENDER
DEPARTMENT OF DETENTION



SOURCE: PCSO AIM SYSTEM 2008

GRAPH 9

Note: Rounded to nearest tenth percent

Table 16 and Graph 10 summarize the total number of 2007 protective action incidents by member to subject by race occurring within the Department of Law Enforcement.

2007 PROTECTIVE ACTION INCIDENTS BY MEMBER TO SUBJECT BY RACE
DEPARTMENT OF LAW ENFORCEMENT

PROTECTIVE ACTIONS BY MEMBER TO SUBJECT BY RACE DEPARTMENT OF LAW ENFORCEMENT			
MEMBER	SUBJECT	NUMBER	PERCENTAGE
Black	Black	0	0.0%
Black	Hispanic	1	0.6%
Black	White	3	1.6%
Hispanic	Hispanic	2	1.1%
Hispanic	White	1	0.6%
White	Asian	1	0.6%
White	Black	40	22.1%
White	Hispanic	29	16.0%
White	White	104	57.4%
TOTAL		181*	100.0%

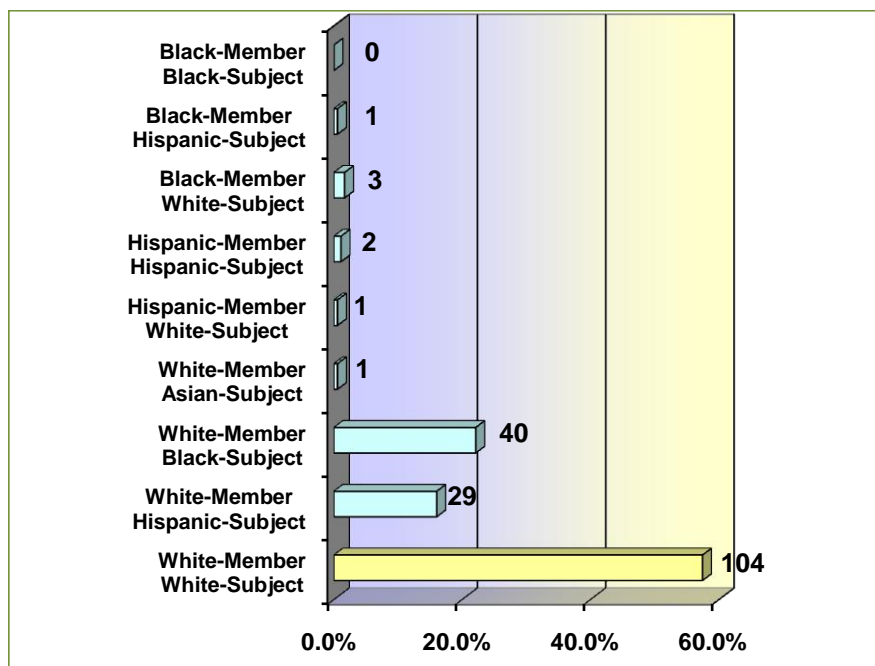
SOURCE: PCSO AIM SYSTEM 2008

*Excludes animal, accidental discharge incidents and subjects fled

TABLE 16

Note: Rounded to nearest tenth percent

2007 PROTECTIVE ACTION INCIDENTS BY MEMBER TO SUBJECT BY RACE
DEPARTMENT OF LAW ENFORCEMENT



GRAPH 10

SOURCE: PCSO AIM SYSTEM 2008

Note: Rounded to nearest tenth percent

Table 17 and Graph 11 summarize the total number of 2007 protective action incidents by member to subject by race occurring within the Department of Detention.

2007 PROTECTIVE ACTION INCIDENTS BY MEMBER TO SUBJECT BY RACE
DEPARTMENT OF DETENTION

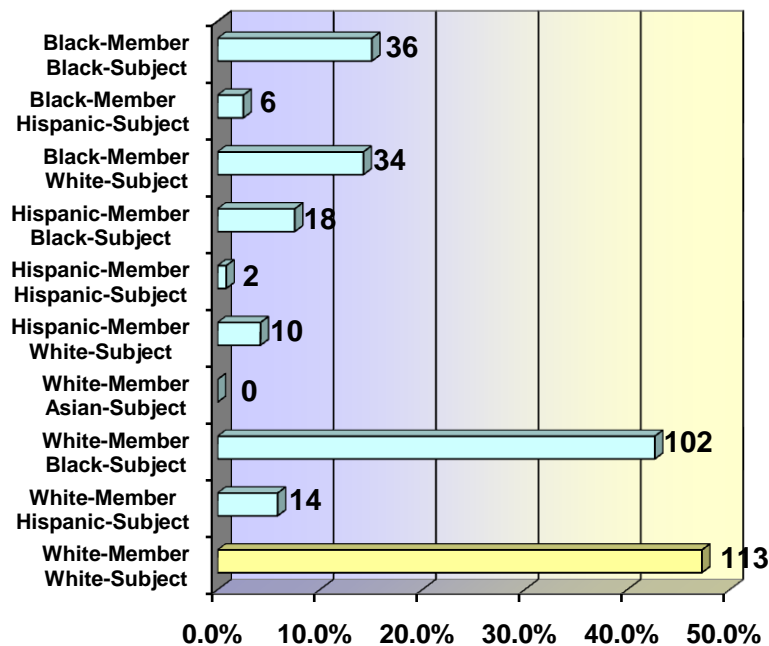
PROTECTIVE ACTION INCIDENTS BY MEMBER TO SUBJECT BY RACE DEPARTMENT OF DETENTION			
MEMBER	SUBJECT	NUMBER	PERCENTAGE
Black	Black	36	10.7%
Black	Hispanic	6	1.8%
Black	White	34	10.2%
Hispanic	Black	18	5.4%
Hispanic	Hispanic	2	0.6%
Hispanic	White	10	3.0%
White	Asian	0	0.0%
White	Black	102	30.4%
White	Hispanic	14	4.2%
White	White	113	33.7%
TOTAL		335	100.0%

SOURCE: PCSO AIM SYSTEM 2008

TABLE 17

Note: Rounded to nearest tenth percent

2007 PROTECTIVE ACTION INCIDENTS BY MEMBER TO SUBJECT BY RACE
DEPARTMENT OF DETENTION



GRAPH 11

SOURCE: PCSO AIM SYSTEM 2008

Note: Rounded to nearest tenth percent

G.O. 1.5.D.5.a. The Response Continuum presented in this Order is based on a model developed by the Florida Department of Law Enforcement (FDLE) Criminal Justice Standards and Training Commission (CJSTC) Defensive Tactics Task Force. The continuum is intended to be used as a guideline for members in selecting effective, reasonable, and legal protective actions in verbal and physical encounters. (Refer to Protective Action Response to Resistance Continuum [PCSO Form 563].)

Polk County Sheriff's Office Protective Action Response to Resistance Continuum

Protective Action Continuum

Subject Levels of Resistance	6 Aggravated Physical	X	X	X	X	X	X	X	X	X	X	X	X	X	X	X	X	X	X	X
	5 Aggressive Physical	X	X	X	X	X	X	X	X	X	X	X	X	X	X	X	X	X	X	X
	4 Active Physical	X	X	X	X	X	X	X	X	X	X	X	X	X	X	X	X	X	X	X
	3 Passive Physical	X	X	X	X	X	X	X	X	X	X	X	X	X						
	2 Verbal	X	X	X	X	X	X	X	X											
	1 Presence	X	X	X																
	Checked areas represent suggested, acceptable, beginning response levels. Any response in an unchecked area requires justification. Refer to the definitions for each level of resistance, response, and the determining factors when articulating the justification. (GO 1.5)	Presence	Field interrogation Stance	Preemptive Physical Control	Dialogue	Verbal Direction	Touch	Preemptive Physical Control	Further Escalation	Transporters	Pain Compliance	Takedowns	Restraint Devices	Counter Moves	Empty-Handed/Palm Strikes	E.M.D./Taser	Chemical Defense Equipment	Impact Weapon	K-9, Equine	Incapacitation
	Command Presence			Communication					Physical Control					Intermediate Weapons					5	6

Protective Action Reporting Requirements

Protective Action Continuum	Response Levels	Protective Action Report (PCSO Form 206A)	Incident Report
	1 Presence	No	
	1 Field Interview Stance	No	
	1 Preemptive Physical Control	No	
	2 Dialogue	No	
	2 Verbal Direction	No	
	2 Touch	No	
	2 Preemptive Physical Control	No	
	2 Escalation	No	
	3 Transporters	No (Yes: If injuries – known or suspected)	Yes
	3 Pain Compliance	No (Yes: If injuries – known or suspected)	Yes
	3 Takedowns	No (Yes: If injuries – known or suspected)	Yes
	3 Restraint Devices	No (Yes: If injuries – known or suspected)	Yes
	3 Counter Moves	No (Yes: If injuries – known or suspected)	Yes
	4 E.M.D./Taser	Yes	Yes
	4 Chemical Defense Equipment	Yes	Yes
	4 Impact Weapon	Yes	Yes
	4 K-9, Equine	Yes	Yes
	4 Empty-handed/Palm Strikes	Yes	Yes
	5 Incapacitation	Yes	Yes
	6 Deadly Protective Action	Yes	Yes

In accordance with General Order 1.5-Protective Action, the Response to Resistance Continuum shall be comprised of Subject Levels of Resistance and Member Administered Control which incorporate the following:

Subject Levels of Resistance

Level One: Presence: A subject is there, on the scene, in attendance of suspicious activity.

Psychological Intimidation: Nonverbal intimidation tactics may include clenching fists, widening of foot stance, a blank stare, and other forms of body language.

Level Two: Verbal Resistance: A subject may verbally refuse to comply with a member's request of attempts to control the situation. A subject may verbally threaten a member with further resistance. A subject may boast of their fighting skill and of intentions to injure a member, or, a subject may simply refuse to respond to or ignore a member.

Nonverbal Cues: A subject's verbal resistance may be accompanied by body language which may indicate their intentions with regard to physical resistance. A subject may assume a fighting stance such as raised hands and clenched fists. A subject may grab a fixed object to be used as an anchor, or, a subject may lie or sit down placing their hands under their body.

Level Three: Passive Physical Resistance: A subject physically refuses to comply or respond. They do not make any attempt to physically defeat the actions of a member, but instead forces a member to use physical maneuvers to establish control. Passive resistance is usually in the form of a relaxed or "dead weight" posture intended to make a member lift, pull, or move a subject to establish control.

Level Four: Active Physical: A subject makes physically evasive movements to defeat a member's attempt at control. This may be in the form of bracing or tensing, attempts to push/pull away, or not allowing a member to get close to them. However, a subject does not attempt to strike a member or inflict bodily harm upon a member.

Level Five: Aggressive Physical Resistance: A subject makes overt, aggressive, hostile, attacking movements which may cause injury to a member but are not likely to cause death or great bodily harm to a member or others.

Level Six: Aggravated Physical Resistance: A subject makes overt, hostile, attacking movements with or without a weapon with the intent and apparent ability

to cause death or great bodily harm to a member or others.

Member-Administered Control

Level One: Presence: A member is there, on the scene, in attendance. This includes proper voice and/or other identification, body language, alertness, and readiness, all denoting the presence of authority to a subject.

Field Interrogation Stance: A member adopts a stance with a subject outside their danger zone that provides appropriate protection and forms the basis of an effective physical response if attacked. In such a stance, the firearm or strong side leg is away from a subject; the non-firearm or "reactionary side" leg is forward toward subject; the feet are about shoulder width apart; knees slightly bent giving balance, control, and a lower body center of gravity; equally distributed body weight; and the hands are at least waist high in readiness for guarding the upper body. Proper distance from a subject should be where a member can see both the hands and feet of a suspect in case an offensive action against a member is made.

Preemptive Physical Control: A member may escalate to physical control before any overt moves are made by a subject if the nonverbal signs given by a subject indicate an immediate potential for violence and/or a member believes that physical control is necessary to prevent a subject from injuring themselves, others, or a member.

Level Two: Dialogue: A two-way, controlled, non-emotional, business-like communication between a member and a subject, directed toward problem identification and/or resolution.

Verbal Direction: A member tells or commands a subject to engage in, or refrain from, a specific action or non-action.

Touch: A member exerts a soft touch when directing, or a firm, strong touch prior to escalating to a higher level of response.

Preemptive Physical Control: A member may escalate to physical control before any overt moves are made by a subject if the verbal communications by a subject indicate an immediate potential for violence and/or a member believes that physical control is necessary to prevent a subject from injuring themselves, others, or a member.

Further Escalation: A member's reaction to verbal threats should be based on a reasonable perception of the validity of the threat, a subject's ability to carry out that threat, and a member's own physical ability

to manage the threat. If a subject's body language during a threat indicates their intention to escalate their resistance, a member should prepare to escalate to intermediate weapons, or even to lethal weapons if a subject has a weapon or has such physical advantage that the threat of death or great bodily harm exists.

Level Three: Transporters: Techniques used to control and/or move a subject from point A to point B with minimum effort by a member in order to gain and retain control over a subject.

Pain Compliance: Techniques that force a subject to comply with a member as a result of a member inflicting controlled pain upon specific points in a subject's body, such as pressure point techniques.

Takedowns: Techniques that redirect, in a controlled manner, a subject to the ground in order to limit their physical resistance and to facilitate the application of a restraining device.

Restraint Devices: Mechanical tools used to restrict a subject's movements, such as handcuffs, flexcuffs, leg irons, belly chains, and nylon restraining devices.

Counter Moves: Techniques that impede a subject's movement toward a member or others such as blocking, parrying, dodging, weaving, re-directing, or avoiding, followed by appropriate controlling techniques.

Level Four: Intermediate Weapons: Member-administered control through the use of empty-handed strikes, palm strikes, or intermediate weapons may be utilized to bring a subject into compliance. Intermediate weapons that are primarily used to render a subject controllable are an expandable baton, side-handle baton, canine, equine, less lethal munitions, E.M.D./Taser, chemical defense equipment, and during exigent circumstances, the agency-issued flashlight. They are also utilized for control, but shall only be utilized in compliance with the Response to Resistance Continuum.

Level Five: Incapacitation: Techniques that are intended to stun or render a subject temporarily unconscious, delivered with or without intermediate weapons, such as a strike to a major nerve area.

Level Six: Deadly Protective Action: Techniques that may result in imminent death or great bodily harm, such as neck restraints, intermediate weapon strikes to the head or joints, and use of firearms.

Deadly use of protective action should be used only as a last resort.